

# The University of Texas at El Paso Increases Fund Utilization by 20% with FundMiner



## 2,300+

Funds centrally tracked across one platform

## 50%

Reduction in donor reporting time (6 → 3 months)

## 20%+

Increase in fund utilization with continuous monitoring

### About

A public research university in El Paso, Texas, serving a large Hispanic-majority population.

### Industry

Higher Education / Research

### Organization Size

10,001+ Employees

### Student Body

25,000 students (2024)

### Endowment

\$368.7 Million (UTEP)

\$47.47 Billion (System)

### Challenges

Fragmented fund and financial data across 5 disconnected systems

Manual donor reporting took 6 months to complete

Need for greater compliance visibility and donor transparency

### Solutions

FundMiner unified fund, finance, recipient, and donor data in one platform

Automated annual donor reporting workflows

Continuous utilization + compliance monitoring

### Results

Enabled self-serve access and eliminated data silos

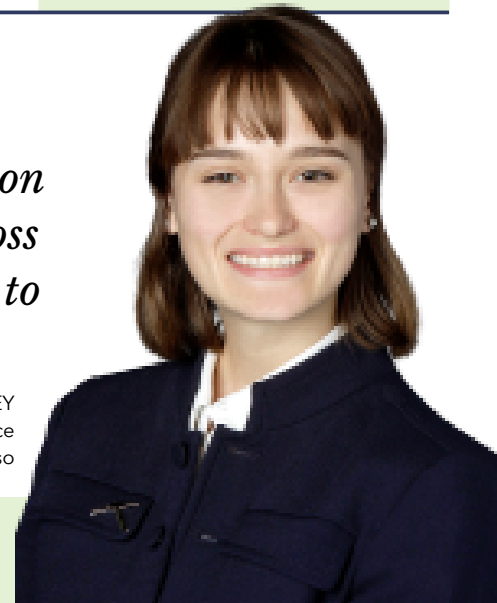
Reduced reporting cycle time by ~50% (6 months → 3 months)

Improved donor trust and supported additional fundraising

*"This system has been life-changing for our team. With FundMiner, we can easily access all gift information and current statuses. It also allows faculty and staff across campus to see and understand what funds are available to them. I can't imagine working without this system."*

HILLARY DUDLEY

Associate Director of Gift Services and Compliance  
The University of Texas at El Paso



Set up a call to talk to an expert at [fundminer.com](https://fundminer.com)